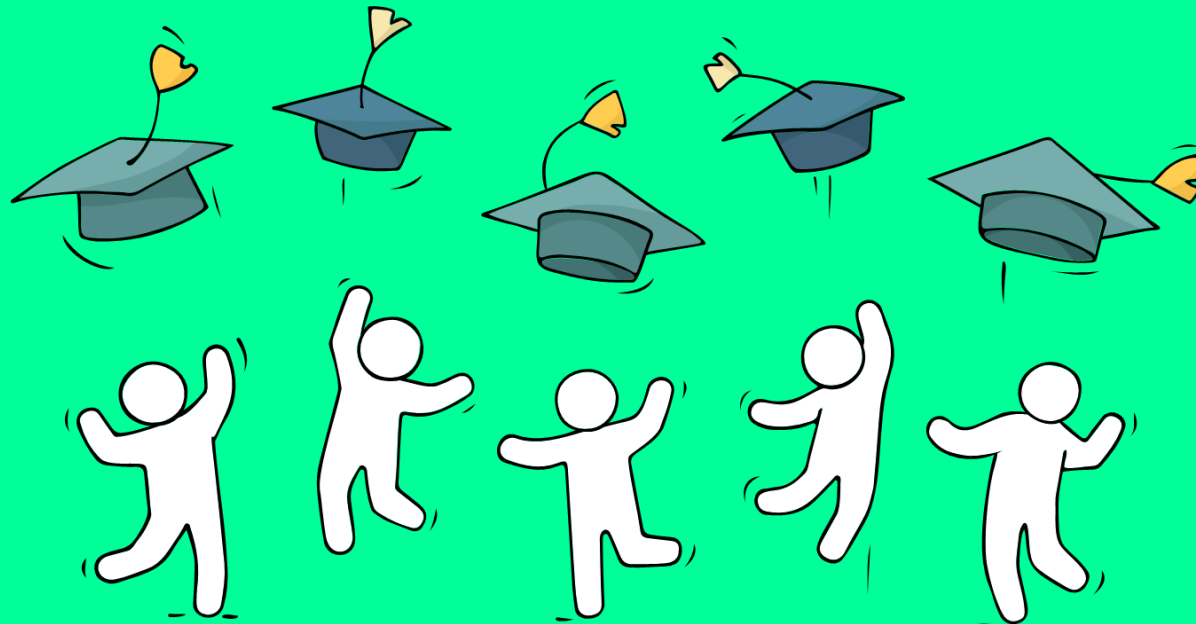


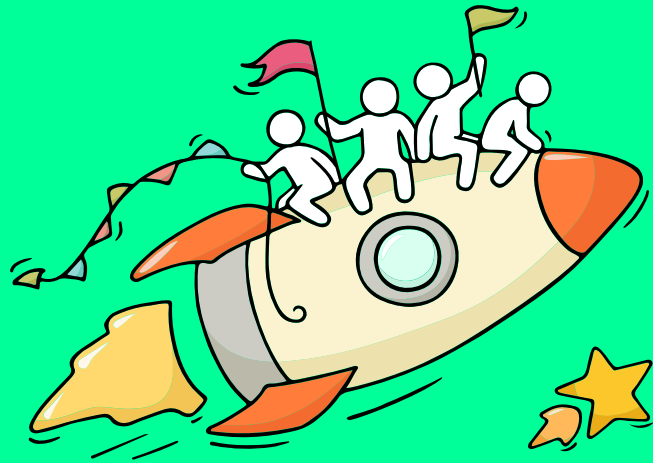
Welcome Back!

Briefing Slides for Release of N-Level Results



Dear students,

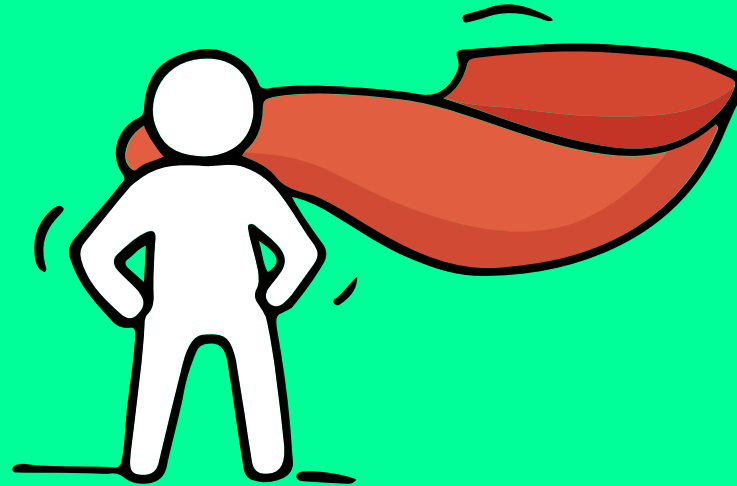
As we gather here today, let us
all celebrate our efforts!



*Finally, we are going to
get our results!*



Think about your opportunities



*Are we all going to
be okay?*

Remember that **everyone's** learning journey is different
but **we** can each have a fulfilling outcome!

No matter the circumstances, there is always a way forward.

Stop

- Calm yourself down. Take a few deep breaths.

Think

- Think through the different options that are available for you. Keep things in perspective.
- Remember that the N-Level is one part of your life journey and not the destination.

Do

- Approach a trusted adult and seek his/her help. Have a conversation with this person about what would be best for you.
- Make a decision and take action based on your options.

When you receive your results, you may experience a range of emotions.

Managing these emotions well will allow you to stay calm and make rational decisions.

**Keep a lookout for
some of these signs
in your peers or
yourself.**

*How can we
support one
another?*



**D
I
S
T
R
E
S
S**

Deliberately avoiding others

Increased irritability, restlessness, agitation,
stress and anxiety

Sending or posting moody messages on social
media

Talking about death or dying

Reacting differently or gradually losing interest
in things they used to like

Eating more than usual or having a much
reduced appetite

Sleep pattern changes with difficulty falling
asleep or oversleeping

Slowing down of energy levels

If you notice any of these signs in yourself or your friends,
have a chat with your school counsellor or teacher

Or contact SOS 24-hour hotline at **1800-221-4444**

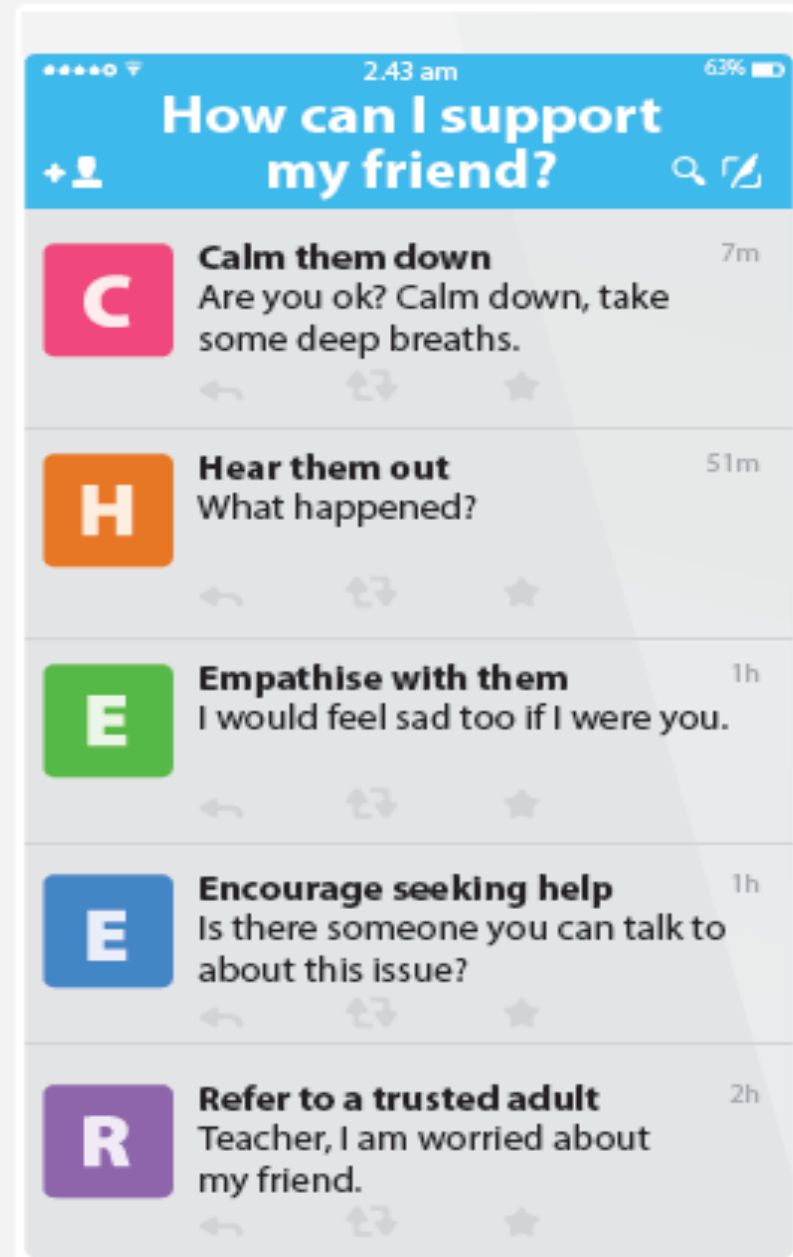


Supporting Your Friend

We may each experience different emotions upon receiving the results. You can share your friends' joy by congratulating them or give words of encouragement to friends who may be disappointed with their results.



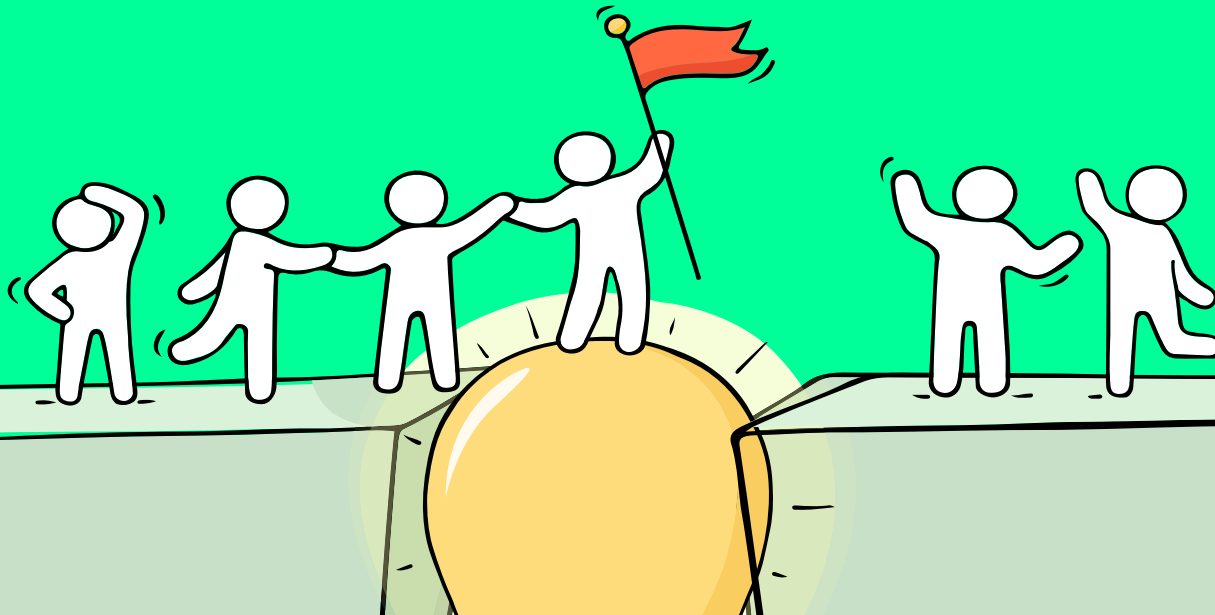
Keep a lookout for your friends in distress. You can support them in the following ways:



Reaching out for help is a sign of strength, not weakness.

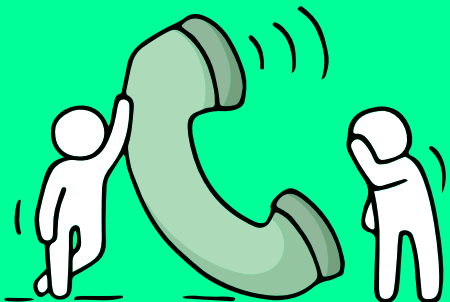
*Is there
someone we
can speak with?*

If you have any concerns or are not coping, do reach out to someone you trust and speak with them. It could be a parent/guardian, teacher, School Counsellor or a friend that you can talk to.



Help is readily available for you.

There are other hotlines and chats available if you are more comfortable seeking help using these platforms.



SOS

SOS provides round the clock emotional support for those in distress, thinking of suicide or affected by suicide. This service is manned by trained volunteers.

Call: **1-767 or 1800-221-444**
(24-hour helpline)

There are also alternative avenues for emotional support through email and text messaging.

Email: **pat@sos.org.sg**
(Response within 48 hours)

SOS Care Text: **www.sos.org.sg**
(6pm – 6am on Mon to Thu and 6pm to 11:59pm on Fri)

Community Health Assessment Team (CHAT)

If you experience prolonged difficulties, CHAT provides personalised and confidential mental health checks and face-to-face consultation for youth aged 16 to 30. To speak with a youth support worker, you can:

Visit: **CHAT Hub at *SCAPE, #05-05** or
Call: **6493 6500/ 6501** or
Email: **CHAT@mentalhealth.sg**

Help is readily available for you.

There are other hotlines and chats available if you are more comfortable seeking help using these platforms.

eC2

eC2 is an e-Counselling Centre where you can talk to a trained counsellor about the issues you are facing, right where you are.

Youths may chat with a counsellor online at:
www.ec2.sg

Monday – Friday
(Excluding Public Holidays): 10am – 12pm & 2pm – 5pm

TOUCHline

TOUCHline is a helpline to provide youths with emotional support and practical advice.

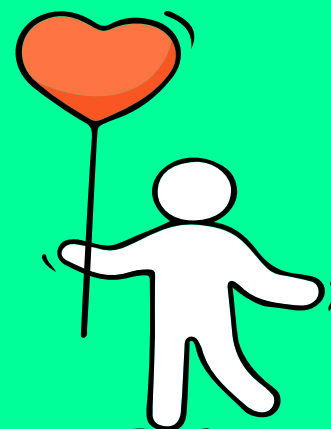
Call: **1800 3772252**

Monday – Friday
(Excluding Public Holidays): 9am – 6pm

mindline.sg

mindline.sg is an online platform that provides tools, tips and resources to help you manage your health and well-being. Explore and find out how you can improve your mental well-being and support your friends too.

Find out more:
www.mindline.sg



Help is readily available for you.

Reach out to an ECG Counsellor!

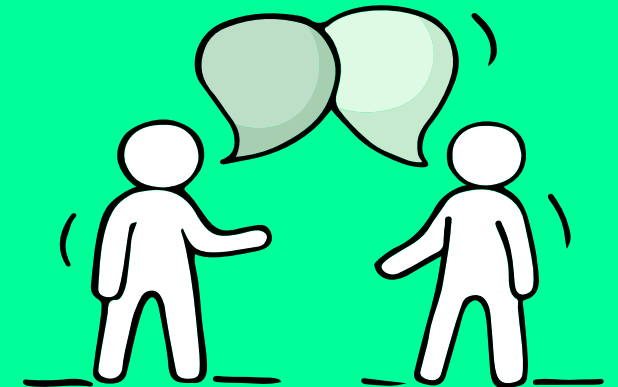
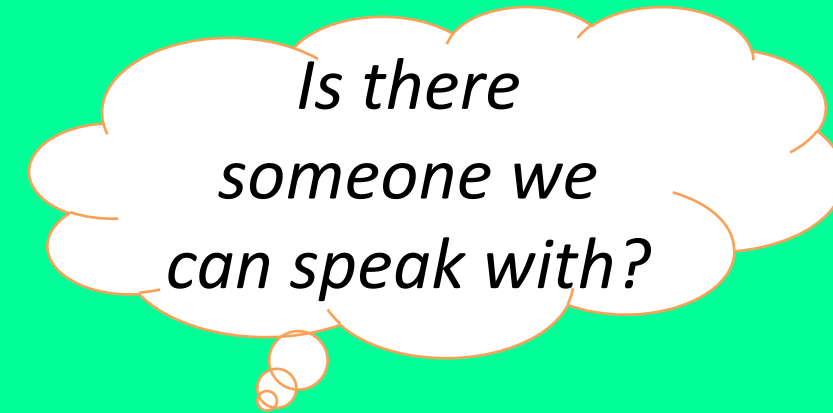
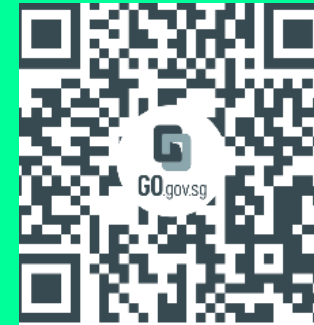
Make an appointment to speak with your ECG
Counsellor in school.

Ms Ming

Lai_Yi_Ming@schools.gov.sg

Make an online or phone counselling appointment
with the ECG Centre @ MOE (Grange Road)
through

<https://go.gov.sg/moe-ecg-centre>



Thinking About Your Next Step?



Who am I?

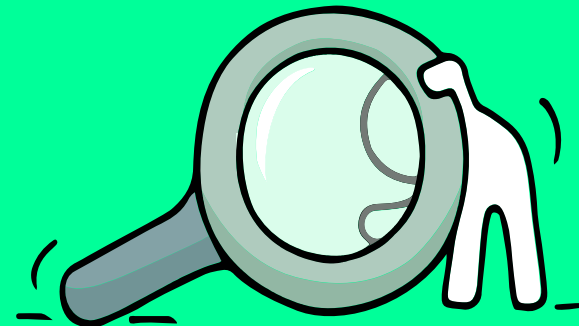
Where do I want to go?

How do I get there?

Resources to help you make informed decisions

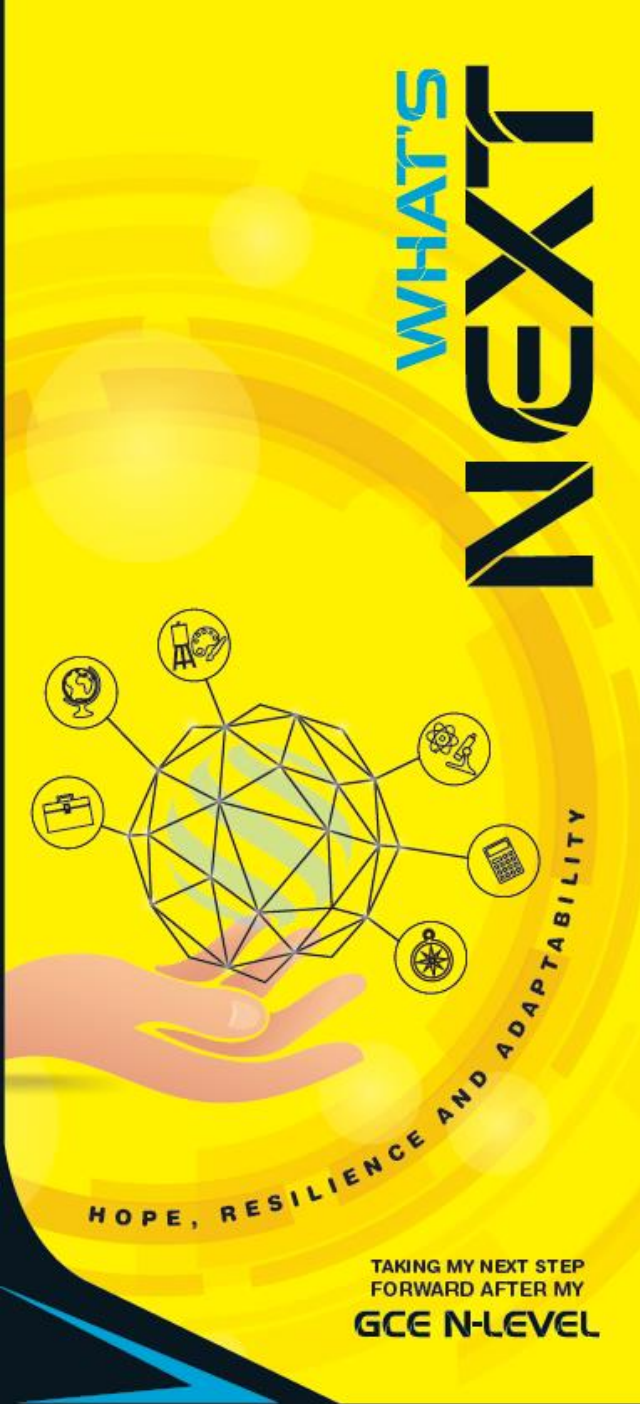


Where can we find more information?



<https://go.gov.sg/mySFsec>

<https://go.gov.sg/mySFsec>



Resources to help you make informed decisions

Where can we find more information?



<https://go.gov.sg/whats-next-nlevel>



<https://go.gov.sg/whats-next-nlevel>

Post-Secondary Education

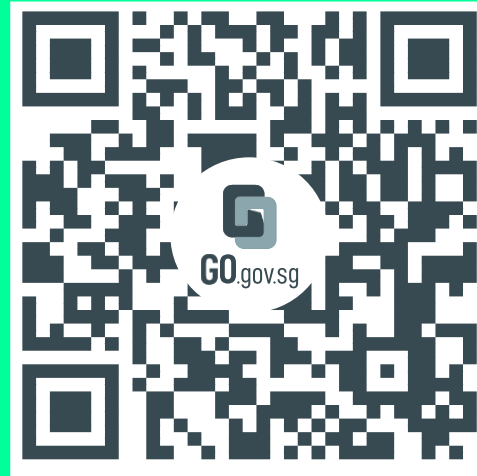
Learn more about the admissions exercises and programmes

<https://moe.gov.sg/post-secondary/admissions>



Learn more about the post-secondary education institutions

<https://moe.gov.sg/post-secondary/overview>





Unsure of what's next?

Explore different jobs and industries with **On My Way (OMW)**. Find out if your career goal and educational pathway match your interests, values and ambitions.

Get key info on **jobs and industries** that you aspire to enter, with quick FAQs on **how to get there!**



Peek into a **day in the life of professionals** from various fields with our video series.

Connect with schooling seniors, go on learning journeys, or tune in to our industry panels, we've got programmes planned from Nov 2022 to Feb 2023

Go to <https://go.gov.sg/omw-moerrp2023> and let's get you on your way!



<https://go.gov.sg/omw-moerrp2023>

KNOW IT ALL
COPY URL TO SHARE

INVESTMENT BANKER

Investment Bankers sell securities and provide strategic advice to their clients. They advise clients on raising funds from the equity/debt capital markets and merger and acquisitions (M&A).

RESPONSIBILITIES

- Advise corporate clients on product offerings, private equity transactions, mergers and acquisitions, and valuations.
- Determine the **best strategy** and place to **raise debt or equity capital**.
- Prepare necessary documents to **protect the company and investor**.
- Ensure all **government regulations have been adhered to**.
- Perform financial modelling using valuation methods.

HARD SKILLS

- Financial Modelling (e.g. DCF, Public Comps, M&A Comps)
- Data Analytics
- Strong Mathematical and Numerical Skills

SOFT SKILLS

- Influencing and negotiation skills
- Innovative Problem Solving
- Customer Orientation
- Communication

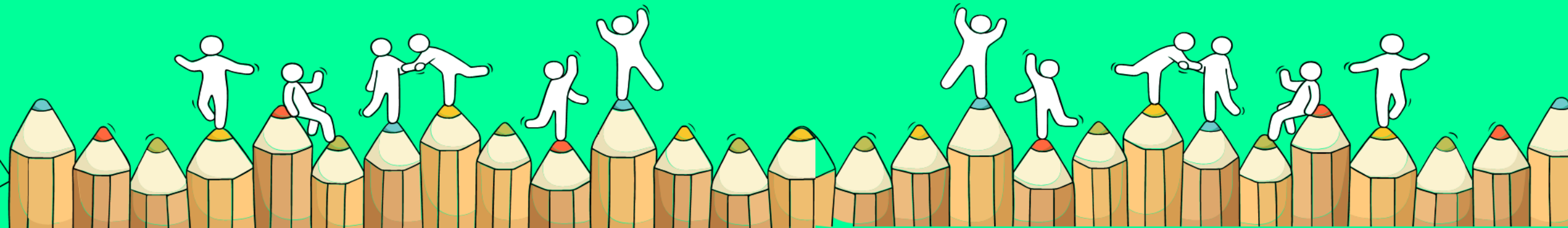
**The N-Level is not
the destination.**



**It is part of your
education journey.**

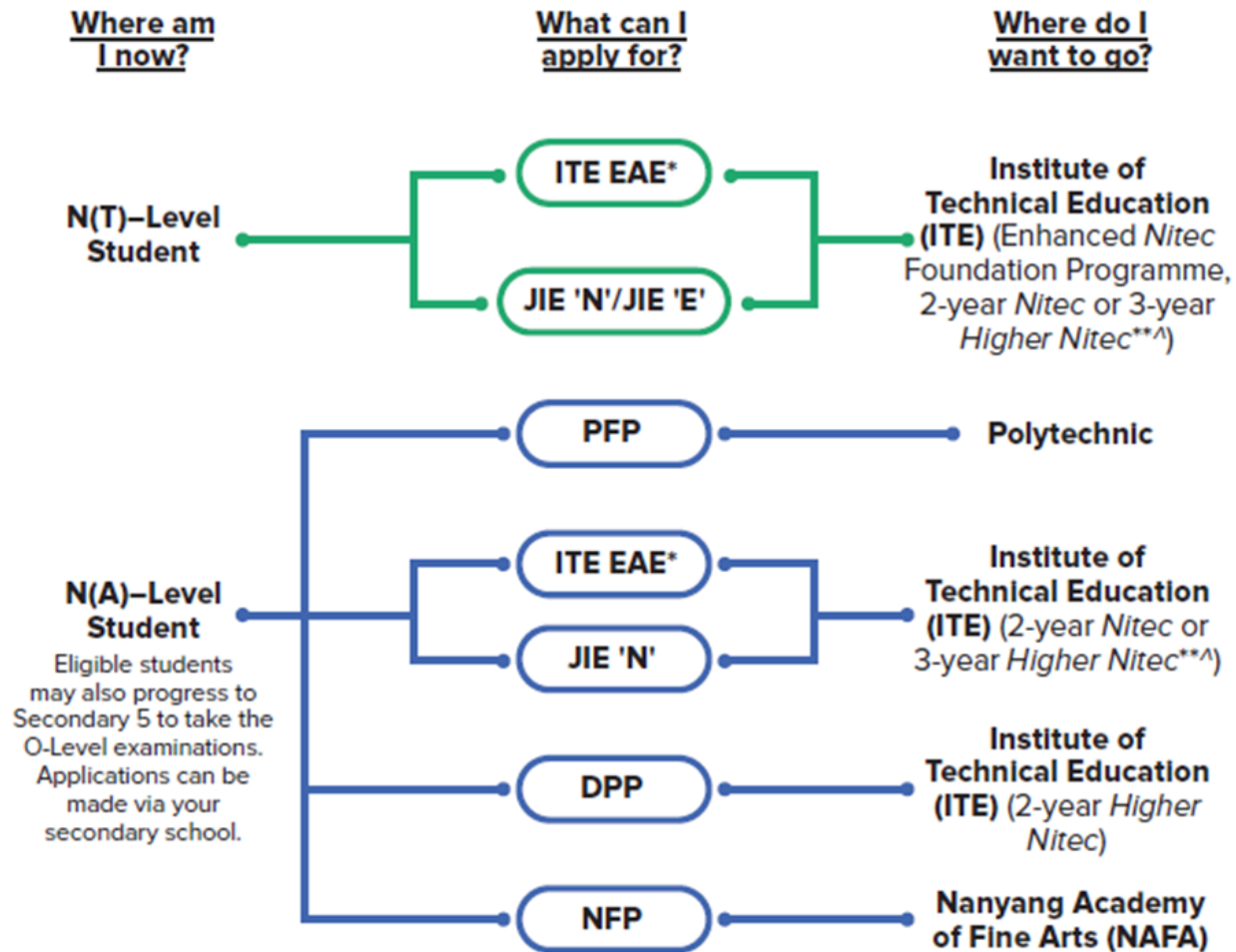
Admission Exercises

Things to note





Admissions Exercises for N-Level Students



<https://www.moe.gov.sg/post-secondary/admissions>

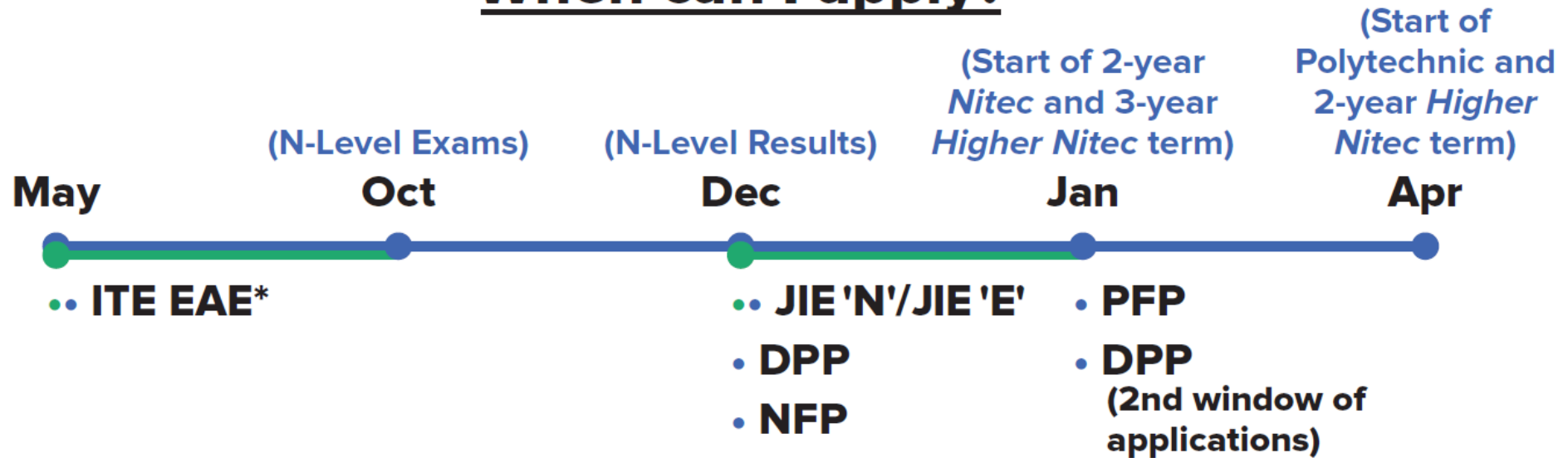


Source: A Guide to Post-Secondary Admissions Exercises

Admissions Exercises Application Timeline



When can I apply?



*Students can apply through these admission exercises before their examinations.

**Selected *Nitec* and *Higher Nitec* courses are available in traineeship mode. For more information on applying to these courses, you can visit <https://www.ite.edu.sg/admissions/traineeship>

^ There are **25** 3-year Higher Nitec courses available for AY2024

JUST-IN-TIME INFORMATION on JIE APPLICATION (Jan 2024 intake) For N(A)* and N(T) School Leavers

*Applicable for N(A) students not eligible for progression to 5N(A) and/or not seeking retention at 4N(A)

Information Slides for Teachers

A PRESENTATION BY
MINISTRY OF EDUCATION, SINGAPORE

Key Dates for Jan 2024 Intake Exercise (Full-time Nitec Courses)

Key Activity	Period for 2-Year and 3-Year Nitec Courses, and 3-Year and 4-year Higher Nitec courses	Remarks
1st Phase (Main Phase)		
Application	18 Dec 2023 (2.30pm) to 21 Dec 2023 (5pm)	Apply through the Internet at https://www.ite.edu.sg with NRIC / FIN and Date of Birth. You may also apply using SingPass.
Release of Results	29 Dec 2023 at 9am	Check results at https://istudent.ite.edu.sg with web ID and password
Acceptance of Course Offer Period	29 Dec 2023 to 3 Jan 2024	Accept course offer at https://istudent.ite.edu.sg with web ID and password
2nd Phase (Late Application/Appeal Phase)		
Application	29 Dec 2023 to 3 Jan 2024	Apply through the Internet at https://istudent.ite.edu.sg with NRIC / FIN and Date of Birth. You may also apply using SingPass.
Release of Results	10 Jan 2024 at 9am	Check results at https://istudent.ite.edu.sg with web ID and password
Acceptance of Course Offer Period	10 Jan 2024 to 12 Jan 2024	Accept course offer at https://istudent.ite.edu.sg with web ID and password
3rd Phase (Final Top-up Phase)		
Application	1st Top-up Phase Application - 10 Jan to 18 Jan 2024 2nd Top-up Phase Application - 24 Jan to 7 Feb 2024	Apply through the Internet at https://istudent.ite.edu.sg with NRIC / FIN and Date of Birth. You may also apply using SingPass.
Release of Results	1 st Top-up Phase - 15 Jan to 24 Jan 2024 2 nd Top-up Phase - 24 Jan to 14 Feb 2024	Check results at https://istudent.ite.edu.sg with web ID and password
Acceptance of Course Offer Period	1 st Top-up Phase - 15 Jan to 24 Jan 2024 2 nd Top-up Phase - 24 Jan to 14 Feb 2024	Accept course offer at https://istudent.ite.edu.sg with web ID and password

Jan 2024 Intake Term Commencement Date: **8 Jan 2024**

JUST-IN-TIME INFORMATION ON JIE APPLICATION (JAN 2024 INTAKE)

Information For Students on Key Dates for Jan 2024 intake

1. All N(A)* / N(T) school leavers are encouraged to put in an application during the **1st Phase (Main Phase)** between **18 Dec 2023 (2.30pm) to 21 Dec 2023 (5pm)**. Application results for the 1st Phase will be released on **29 Dec 2023 at 9am**.
2. If you wish to appeal, please accept the course offered **before** applying in the **2nd Phase (Late Application/Appeal Phase)** between **29 Dec 2023 to 3 Jan 2024**. The application results for the 2nd Phase will be known on **10 Jan 2024 at 9am**.
3. Unsuccessful applicants can appeal under the **3rd Phase (Final Top-up Phase)** between **10 Jan to 18 Jan 2024 and 24 Jan to 7 Feb 2024** for courses with vacancies. The application results for the 3rd Phase will be known between **15 Jan to 24 Jan 2024** and **24 Jan to 14 Feb 2024**.

*N(A) students progressing to ITE

Key Pointers for Students on ITE's Joint Intake Exercise (JIE) for Admission to Nitec Courses

ALL N(T) students and N(A) students (who are not progressing to 5N(A) or repeating 4N(A)) are eligible for JIE.

Keen competition for Nitec and Higher Nitec courses, so use all 12 choices wisely!

Participation in Main Phase is key to secure a place in ITE!

If you are keen in the work & learn option, you may consider applying for the ITE Traineeship programme. Do apply in the Main Phase to avoid missing a place in ITE!

If you are unsuccessful in EAE, make sure you apply in Main Phase to avoid missing a place!

If you have received an additional letter, then you are eligible for the Enhanced Foundation Programme.

If you are eligible for EFP, make sure you apply for the 2-year Nitec and 3-year Higher Nitec first before applying for EFP!

The EFP helps to build the necessary literacy and numeracy foundations that will enable you to successfully complete your Nitec course!

If you are counter-offered a course, accept it first before appealing for another course you may be more interested in!

STEP-BY-STEP INFORMATION FOR JIE APPLICATION

Online Application for

2-Year Nitec and 3-Year
Higher Nitec Courses

3-Year Nitec/4-year Higher Nitec
Course with EFP
(for N(T) courses with 0, 1 pass)


1. Go to <https://www.ite.edu.sg>.

2. Click



icon.

3. Under JIE 'N', click  icon to link to the application website

Under JIE 'E', click  icon to link to the application website

4. At the application website:

- a) Enter NRIC / FIN and Date of Birth to start application. You may also apply using SingPass.
- b) Upon completion of application, applicants will receive their **web ID** and password.

STEP-BY-STEP INFORMATION FOR JIE APPLICATION

Checking of Posting Results/Accept Course Offer

2-Year Nitec and 3-Year
Higher Nitec Courses

3-Year Nitec/4-year Higher Nitec
Course with EFP
(for N(T) courses with 0, 1 pass)

1. Go to <https://istudent.ite.edu.sg>.
2. Enter **web ID** and password.
3. Click '**Self-Service**' followed by '**Student Admission**' followed by '**View Application Results**' to view the application results and to accept course offer.

The above steps applies to all phases (refer to Slide 9 for dates).
For more details, please refer to ITE Admission Booklet.

RESOURCES FOR STUDENTS

Additional Information For Students


Should you require further advice or assistance in your applications or future plans, please contact your teachers and ECG Counsellor.

For further inquiries, you may refer to the following hotlines and links for more information and advice on further education:

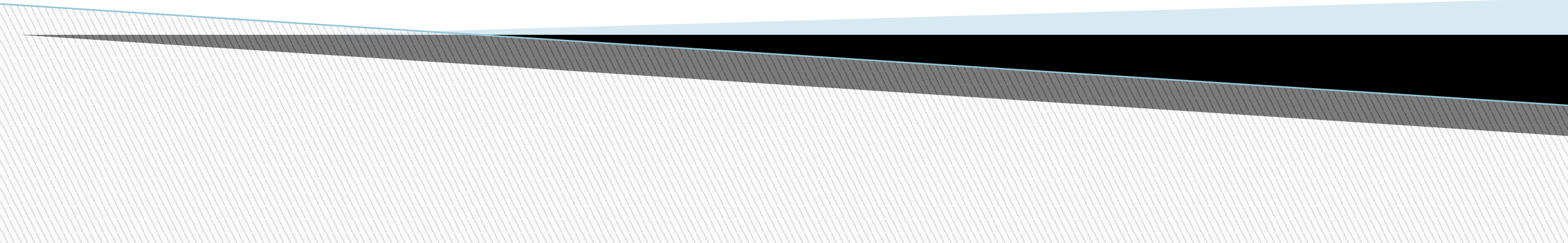
Institute of Technical Education (ITE)	
ITE Hotline (for ITE admissions and courses)	1800 2222 111 training@ite.edu.sg
Education and Career Guidance (ECG)	
ECG Centre @ MOE	<u>6831 1420</u> MOE ECG@moe.gov.sg e-Appointment: https://go.gov.sg/moe-ecg-centre

Additional Information For Students

The information listed in the table below will help you to make an informed decision on which choice of courses you could consider applying at ITE.

S/N	Information	Attachment/Link
1	ITE Factsheet 2023	 JIEN2023 Factsheet
2	ITE Course Booklet 2024	https://for.edu.sg/ite-course-booklet-2024
3	ITE Traineeship Courses	https://www.ite.edu.sg/courses/traineeship-courses .
4	Information on Progression Opportunities (From <i>Nitec</i> Courses to <i>Higher Nitec</i> and Technical Diploma Courses)	https://www.ite.edu.sg/admissions/full-time-courses/nitec/progression-opportunities
5	Information on Graduate Employment Survey	https://www.ite.edu.sg/admissions/graduate-employment-survey

Sec 4N(A) Progression Pathways 2023



Promotion Criteria from Sec 4N(A) to Sec 5N(A)

Criteria

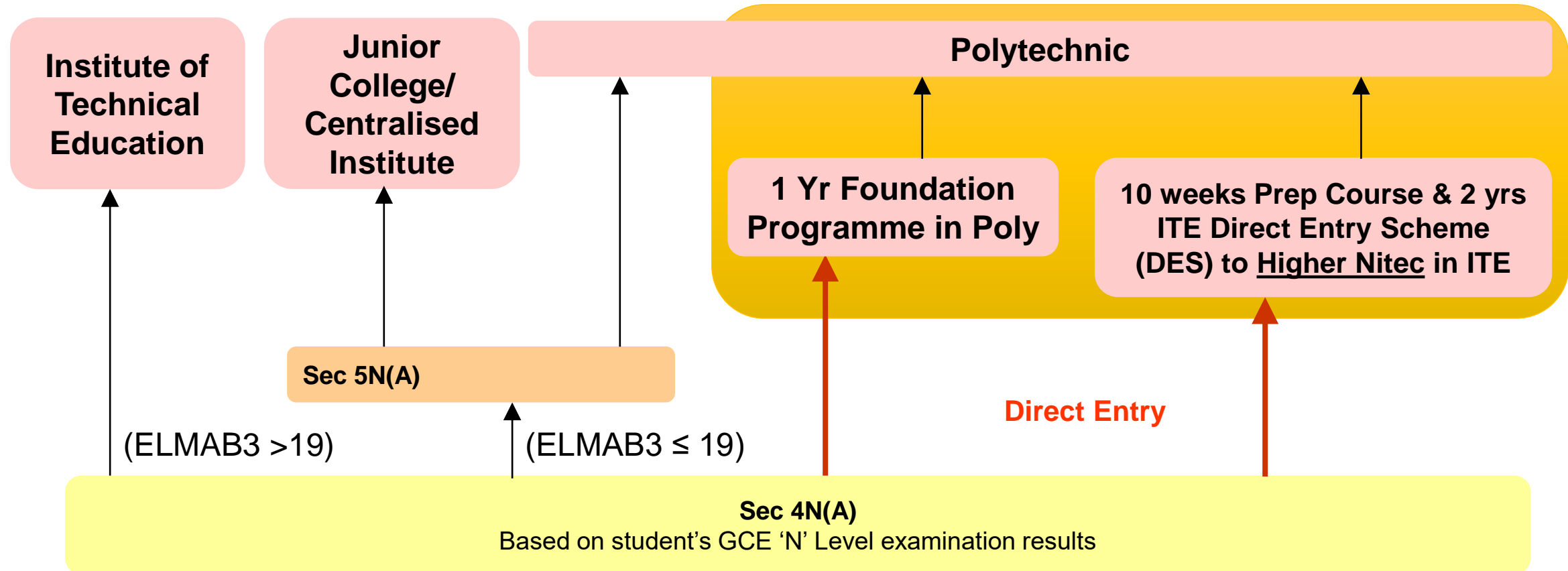
- EL+Maths+Best 3 Subjects \leq 19 points (ELMAB3); and
- Subjects used in computation for ELMAB3 \leq Grade 5

Pathways for Sec 4N(A)

- ▶ Recognises that vast majority of N(A) students will be progressing to applied and market-oriented post-secondary programmes at the polytechnics or the Institute of Technical Education

Pathways for Sec 4N(A)

Sec 4N(A) students who do well in their 'N' Levels can either join the Polytechnic Foundation Programme or ITE's Higher National ITE Certificate (*Higher Nitec*) course directly.



Direct Pathways for Sec 4N(A)

Polytechnic Foundation Programme (PFP)

PFP offers a practice-oriented programme to better prepare polytechnic-bound N(A) students into relevant Diploma Courses

Note:

- ▶ Students who are eligible for PFP can only submit application in January 2024 upon the release of the GCE O-Level results
- ▶ Eligibility does not guarantee placement in a PFP course

Direct Pathways for Sec 4N(A)

Polytechnic Foundation Programme (PFP)

PFP provides an alternative to progression to Sec 5.

This programme is offered by all 5 polytechnics.

Students who successfully complete the PFP will progress to the first year of their chosen diploma course in the same polytechnic.

Direct Pathways for Sec 4N(A)

Criteria for Polytechnic Foundation Programme (PFP)

Criteria

- ELMAB3 not exceeding **12** points (excluding CCA Bonus Points)
provided also that
- Met the subject-specific entry requirements stated in

https://pfp.polytechnic.edu.sg/PFP/pfp_eligibility.html

More details can be obtained in the polytechnic website :

<https://pfp.polytechnic.edu.sg>

Direct Pathways for Sec 4N(A)

Direct-Entry-Scheme-to-Polytechnic Programme (DPP)

DPP benefits students who do well in their N levels with hands-on and experiential learning at ITE, and admitted directly into a two-year Higher Nitec programme at the Institute of Technical Education (ITE) without having to sit for the O-Level examinations or undergo a Nitec programme.

Direct Pathways for Sec 4N(A)

Direct-Entry-Scheme-to-Polytechnic Programme (DPP)

DPP students who successfully complete their Higher Nitec courses at ITE and attained the required qualifying Grade Point Average (GPA) scores are **guaranteed** a place in a polytechnic diploma course mapped to their Higher Nitec course.

Direct Pathways for Sec 4N(A)

Criteria for Direct-Entry-Scheme-to-Polytechnic Programme (DPP)

Criteria

- $\text{ELMAB3} \leq 19$ (excluding CCA bonus points) *and*
- Meet course-specific entry requirements

For Applied Sciences, Engineering and Info-Communications Technology courses:

GCE N-Level subjects	Minimum Required Grades
English Language Syllabus A	4
Mathematics (Syllabus A/ Additional)	4
Any three other subjects excluding CCA	5

For Business & Services courses:

GCE N-Level subjects	Minimum Required Grades
English Language Syllabus A	3
Mathematics (Syllabus A/ Additional)	4
Any three other subjects excluding CCA	5

More details can be found on ITE website:

<https://www.ite.edu.sg/admissions/full-time-courses/higher-nitec-dpp/entry-requirements>

Important Information for PFP

- ▶ PFP application window will start in January 2024 on the day of the release of GCE O-Level result.
- ▶ Students eligible for PFP will receive a copy of Form P contain the PFP PIN on the day of the release of O-Level examination results, inviting them to apply for the PFP.
- ▶ **Students interested in applying for PFP (without applying for DPP) must first start their Sec 5 year on 2 Jan 2024**, while awaiting notification of eligibility and confirmation of a place in PFP.
- ▶ After the release of PFP application results in January, students who **have accepted a place in the PFP** are still **required to attend classes** up till the last Friday of January i.e. **26 January 2024** .
- ▶ Students who have **accepted a place in the DPP under the second application phase** after the release of the O-level results would report to ITE on **22 January 2024 (Monday)**.

Important Information for DPP

- ▶ Students eligible for the DPP will receive a copy of Form N from their secondary schools, inviting them to apply for the DPP.
- ▶ **DPP Application**
 - 18 Dec (2.30 pm) – 21 Dec 2022 (5pm)
- ▶ **Results of DPP Application**
 - Result will be out on **22 Dec 2023 (2pm)**
 - Students who receive a DPP offer will be required to log in ITE application portal (<https://www.ite.edu.sg>) between **22 Dec and 27 Dec 2023** to accept or reject the DPP offer.

Important Information for DPP

➤ Enrolment & Matriculation

- Students who accept their DPP offers are required to complete their enrolment by 8 January 2024 (Mon).
- The 10-week DPP preparatory programme will commence on 8 January 2024.

Note:

Students who have a confirmed place in DPP need not report to school on 2 Jan 2024 for Secondary 5.

Students who do not have a confirmed place in DPP or Nitec programme should report to FMS(S) on 2 Jan 2024 for Secondary 5, if they are eligible for Sec 5NA.

Students who are interested in applying for both PFP and DPP

- ▶ For students who have already applied for and accepted their DPP offer prior to the release of the GCE O-Level examination results, their secondary school will contact them to collect the PFP eligibility form (Form P) if they are eligible for PFP after the release of the GCE O-Level results.
- ▶ For students who decide to apply for and accept their PFP offer in January, they will need to apply for withdrawal from the DPP course. Applicants can apply for a refund of his/her DPP enrolment fees, subject to ITE's approval.



Ministry of Education
SINGAPORE